

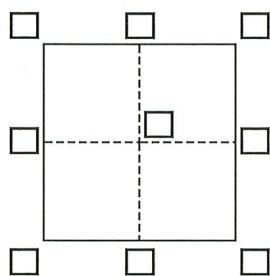
CORNER RECORD

Agency Index CR22-043

Document Number 011-265-01 (ADJ)

City of SAN RAFAEL County of MARIN, California

Brief Legal Description MONUMENT LOCATED WITHIN THIRD STREET AT BROOKS ST



CORNER TYPE

- Government Corner Control
 Meander Property
 Rancho Other

Date of Survey January - February 2022

COORDINATES (Optional)

- N. _____ E. _____
 Elevation _____
 Units Metric U.S. Survey Foot
 Horizontal Datum _____
 Zone _____ Epoch Date _____
 Vertical Datum _____

- Complies with Public Resources Code §§8801-8819
 Complies with Public Resources Code §§8890-8902

PLS Act Ref.: 8765(d) 8771 8773 Other:

Corner/Monument: Left as found Established Rebuilt Pre-Construction
 Found and tagged Reestablished Referenced Post-Construction

Narrative of corner identified and monument as found, set, reset, replaced, or removed:

See sheet #2 for description(s):

FOUND NAIL AND TAG, SET IN SIDEWALK, WITHIN THIRD STREET AT BROOKS STREET, LABELED LS 9387, PER 21 PM 214.

FOUND NAIL AND TAG, SET IN SIDEWALK, WITHIN THIRD STREET AT BROOKS STREET, LABELED LS 9387, PER 21 PM 214.

SET REFERENCE POINTS IN CURB AS SHOWN ON PAGE 2 TO PRESERVE MONUMENT LOCATION.

SURVEYOR'S STATEMENT

This Corner Record was prepared by me or under my direction in conformance with

the Professional Land Surveyors' Act on May 10, 2022

Signed [Signature] P.L.S. or R.C.E. No. 9387



COUNTY SURVEYOR'S STATEMENT

This Corner Record was received 8/4/22

and examined and filed 9/19/22

Signed T. W. Park P.L.S. or R.C.E. No. 8176

Title County Surveyor

County Surveyor's Comment

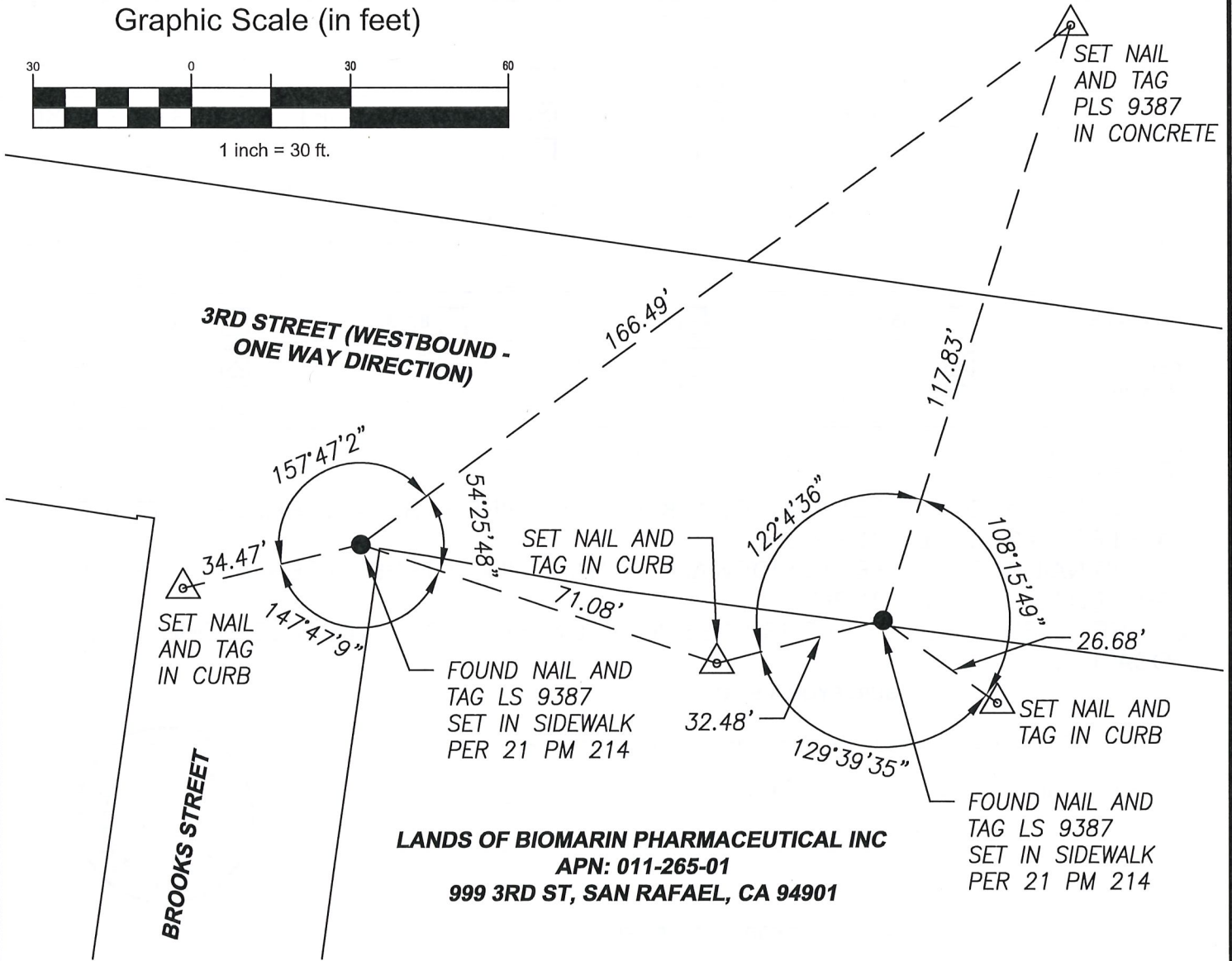
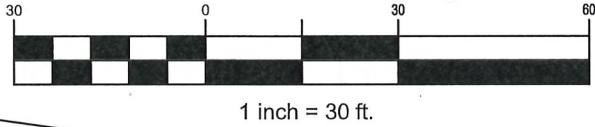




DOC# 011-265-01 (ADJ)
AGENCY INDEX: CR22-043

LANDS OF PAULS TRUST AND GOLDSTONE
APN: 011-263-16
924 3RD ST, SAN RAFAEL, CA 94901

Graphic Scale (in feet)



LANDS OF BIOMARIN PHARMACEUTICAL INC
APN: 011-265-01
999 3RD ST, SAN RAFAEL, CA 94901

LEGEND

- TIE TO PRE-CONSTRUCTION REFERENCE POINT
- △ CONTROL POINT AS NOTED
- FOUND MONUMENT AS NOTED

CSW ST2

CSW/Stuber-Stroeh Engineering Group, Inc.

Civil & Structural Engineers | Surveying & Mapping | Environmental Planning
Land Planning | Construction Management

45 Leveroni Court
Novato, CA 94949

tel: 415.883.9850
fax: 415.883.9835

<http://www.cswst2.com>

© 2019

Rev. -

Date: 05/10/22

Job No. 1920101.50

Scale: 1" = 30'

**MONUMENT PRESERVATION
CORNER RECORD**

MONUMENT LOCATED WITHIN 3RD STREET AT BROOKS STREET

SAN RAFAEL

MARIN

CALIFORNIA